

MINISTRY USE ONLY

MINISTRY USE ONLY

Place Personal Education Number (PEN) here.

Place Personal Education Number (PEN) here.



BRITISH  
COLUMBIA

© 2003 Ministry of Education

MINISTRY USE ONLY

History 12

NOVEMBER 2003

Course Code = HI

### Student Instructions

1. Place the stickers with your Personal Education Number (PEN) in the allotted spaces above. **Under no circumstance is your name or identification, other than your Personal Education Number, to appear on this booklet.**
2. Ensure that in addition to this examination booklet, you have an **Examination Response Form**. Follow the directions on the front of the Response Form.
3. **Disqualification** from the examination will result if you bring books, paper, notes or unauthorized electronic devices into the examination room.
4. When instructed to open this booklet, **check the numbering of the pages** to ensure that they are numbered in sequence from page one to the last page, which is identified by **END OF EXAMINATION**.
5. At the end of the examination, place your Response Form inside the front cover of this booklet and return the booklet and your Response Form to the supervisor.

Score only **one**  
of the following  
two questions:

Question 1:  
1.  .   
(8)

Question 2:  
2.  .   
(8)

Score only **one**  
of the following  
two questions:

Question 3:  
3.  .   
(8)

Question 4:  
4.  .   
(8)

Score only **one** of  
the following two  
essay questions:

Question 5:  
**Topic 1**  
5.   .   
(25)

Question 5:  
**Topic 2**  
6.   .   
(25)

**HISTORY 12**

**NOVEMBER 2003**

COURSE CODE = HI

## GENERAL INSTRUCTIONS

1. Electronic devices, including dictionaries and pagers, are **not** permitted in the examination room.
2. All multiple-choice answers must be entered on the Response Form using an **HB pencil**. Multiple-choice answers entered in this examination booklet will **not** be marked.
3. For each of the written-response questions, write your answer in **ink** in the space provided in this booklet.
4. Ensure that you use language and content appropriate to the purpose and audience of this examination. Failure to comply may result in your paper being awarded a zero.
5. This examination is designed to be completed in **two hours**. *Students may, however, take up to 30 minutes of additional time to finish.*

## HISTORY 12 PROVINCIAL EXAMINATION

	<b>Value</b>	<b>Suggested Time</b>
This examination consists of <b>three</b> parts:		
PART A: 51 multiple-choice questions	51	45
PART B: 2 written-response questions		
• Select and respond to <b>all parts</b> of <b>one</b> question from SECTION 1.	8	15
• Select and respond to <b>all parts</b> of <b>one</b> question from SECTION 2.	8	15
PART C: Essay question	25	45
• Select and respond to <b>one</b> topic.		
<b>Total:</b>	<b>92 marks</b>	<b>120 minutes</b>

**THIS PAGE INTENTIONALLY BLANK**

## PART A: MULTIPLE CHOICE

Value: 51 marks

Suggested Time: 45 minutes

**INSTRUCTIONS:** For each question, select the **best** answer and record your choice on the Response Form provided. Using an HB pencil, completely fill in the circle that has the letter corresponding to your answer.

1. For Germany the **most** hated clause of the Treaty of Versailles dealt with
  - A. war guilt.
  - B. disarmament.
  - C. territorial losses.
  - D. the League of Nations.

Use the following map to answer question 2.



2. According to the Treaty of Versailles with which numbered country was Germany prohibited Anschluss?
  - A. 1
  - B. 2
  - C. 3
  - D. 4

OVER

3. Which of the following is a statement of fact, rather than opinion, about the Paris Peace Settlement?
- A. French demands for revenge were satisfied.
  - B. Italy was justly compensated for its contribution to the war effort.
  - C. The principle of self-determination was applied fairly in the treaties.
  - D. The Big Three Allied leaders agreed to impose reparations on Germany.
4. On what principle was the League of Nations based?
- A. balance of power
  - B. collective security
  - C. spheres of influence
  - D. economic integration
5. According to Marxist theory where was revolution **most likely** to occur?
- A. in a traditional monarchy
  - B. in a largely peasant population
  - C. in an advanced industrial country
  - D. in European colonies in Africa and Asia
6. Which of the following was **not** a feature of American society in the 1920s?
- A. the prohibition of alcohol
  - B. an open immigration policy
  - C. the mass production of consumer goods
  - D. a rise in white supremacist organizations
7. Which of the following is an example of a cause→effect relationship?
- A. Collectivization → expansion of the Kulak class
  - B. NEP → a re-emergence of limited free enterprise
  - C. War Communism → increased support for Stalin's leadership
  - D. First Five-Year Plan → increased availability of consumer goods



8. Which of the following is an accurate statement about the Middle East during the interwar period?
- A. It was controlled by U.S. oil interests.
  - B. It was dominated by British and French imperial power.
  - C. It was struggling for independence through non-violence.
  - D. It was the scene of wars between Israel and the Arab states.
9. What was a common factor in the rise to power of both Hitler and Mussolini?
- A. They led a march on their national capitals.
  - B. They won large majorities in democratic elections.
  - C. They overthrew the government in armed rebellions.
  - D. They used paramilitary organizations to threaten the government.
10. During the 1920s, an indication of coming economic problems in the U.S.A. was decreasing
- A. bank loans.
  - B. credit buying.
  - C. agricultural prices.
  - D. stock market investment.
11. After 1929 why did the Nazi Party increase in popularity among German voters?
- A. The socialist parties agreed with the Nazi solution to the Depression.
  - B. The Depression made people look to political extremes for solutions.
  - C. The Communist Party lost voter support as a result of the Depression.
  - D. President Hindenburg declared his intention to make Hitler chancellor.
12. Which of the following is an **accurate** pairing of events?
- A. the invasion of France—Britain declared war on Germany
  - B. the invasion of Poland—the U.S.S.R. declared war on Germany
  - C. the invasion of Manchuria—Japan withdrew from the League of Nations
  - D. the invasion of Abyssinia—the League of Nations sent peacekeeping troops

13. A significant consequence of the world depression of the 1930s was a strong movement towards
- A. free trade.
  - B. tariff reductions.
  - C. collective security.
  - D. economic nationalism.
14. What was the basis for the Nuremberg Laws?
- A. autarky
  - B. anschluss
  - C. lebensraum
  - D. anti-Semitism

**Use the following quotation to answer question 15.**

Germany is permitted to build submarines. Why the British have allowed this is beyond me.

William L. Shirer, *Berlin Diary*

15. To what does this statement refer?
- A. the Treaty of Versailles
  - B. the Washington Naval Agreement
  - C. the Anglo-German Naval Agreement
  - D. the League of Nations Disarmament Conference
- 
16. By which of the following did Hitler gain the support of the German army?
- A. the Munich Putsch
  - B. the burning of the Reichstag
  - C. the Night of the Long Knives
  - D. the passage of the Enabling Act

**Use the following quotation to answer question 17.**

Without the shedding of any blood I have returned from Munich bearing peace with honour.

17. Who made this statement?

- A. Hitler
  - B. Churchill
  - C. Mussolini
  - D. Chamberlain
- 

18. Which policy did Britain and France follow during the Spanish Civil War?

- A. providing military assistance to Franco
- B. declaring non-intervention in the hostilities
- C. providing military assistance to the Republicans
- D. supporting a cease-fire under the League of Nations

**Use the information list provided to answer question 19.**

- Expansion of the Gulag
- Moscow Show Trials
- Cult of Personality

19. What are the above **most** associated with?

- A. the victory of Trotsky over Stalin
- B. the overthrow of the Provisional Government
- C. the establishment of totalitarianism in the U.S.S.R.
- D. the Soviet defeat of Germany in the Second World War

Use the following documents to answer questions 20 and 21.

#### DOCUMENT 1

The sole possible aim and purpose of the National Socialist system can only be this: to prepare the German people for the “coming war”... to make the German people into a widely obedient, uncritical instrument of war, blind and fanatic in its ignorance.

T. Mann, Letter to the Dean of the University of Bonn (Jan. 1937)

#### DOCUMENT 2

Circumstances have obliged me to speak, for a decade or more, of almost nothing but peace... It is now, however, become necessary to submit the German people to a gradual change in its state of mind and to make it plain that there are things which must be achieved by means of force.

A. Hitler, secret speech (Nov. 1938)

#### DOCUMENT 3

Percentage (%) of major occupational groups supporting the Nazi Party.			
	1923	1930	1935
Blue collar workers	19.7	26.3	32.1
White collar workers	12.9	24.4	20.6
Civil servants	6.6	7.7	9.4
Professionals	16.2	18.9	20.2
Farmers	10.4	13.2	10.7

Stanley Payne, *Fascism* (1980)

#### DOCUMENT 4

**NATIONAL SOCIALISM  
MEANS PEACE!**

Nazi 1932 election slogan  
Stanley Payne, *Fascism* (1980)

20. Which pair of Documents presents the **best** corroborating evidence about Nazism in Germany?

- A. Documents 1 and 2
- B. Documents 1 and 3
- C. Documents 2 and 3
- D. Documents 3 and 4

21. Which of the Documents shows the **least** bias?

- A. Document 1
  - B. Document 2
  - C. Document 3
  - D. Document 4
- 

22. Which of the following events finally convinced Britain that Hitler could not be trusted?

- A. the attack on France
- B. the invasion of Poland
- C. the transfer of the Sudetenland to Germany
- D. the occupation of Czechoslovakia by Germany

**Use the following newspaper headline to answer question 23.**



23. What “agreement” does the headline refer to?

- A. the Axis Pact
- B. the Locarno Treaty
- C. the Treaty of Rapallo
- D. the Non-Aggression Pact

**OVER**

24. American aid was sent to Britain before the U.S.A. entered the Second World War through the
- A. Dawes Plan.
  - B. Marshall Plan.
  - C. Lend-Lease Act.
  - D. Manhattan Project.
25. Why is the Battle of El Alamein considered a turning point in the Second World War?
- A. It forced Italy out of the war.
  - B. It allowed the Allies to invade France.
  - C. It prevented German access to Middle East oil.
  - D. It diverted German troops from the attack on Moscow.
26. What did the development of mass production techniques allow the U.S.A. to do?
- A. to quickly overcome the problems of the Depression
  - B. to provide full employment during the interwar period
  - C. to supply the weapons needed for Allied victory in the Second World War
  - D. to maintain consumer production without rationing during the Second World War

**Use the information provided to answer question 27.**

- |   |
|---|
| <ol style="list-style-type: none"><li>1. Battle of Britain</li><li>2. D-Day</li><li>3. Operation Barbarossa</li></ol> |
|---|

27. What is the correct chronological order of these Second World War operations?
- A. 1, 2, 3
  - B. 1, 3, 2
  - C. 2, 1, 3
  - D. 3, 1, 2

28. Which of the following had a greater role in determining the outcome of the war in the Pacific than the war in Europe?
- A. infantry
  - B. convoys
  - C. aircraft carriers
  - D. long-range bombers
29. All of the following are reasons why Britain was a weaker power in 1945 than in 1939 **except** the
- A. loss of its empire.
  - B. financial cost of its war effort.
  - C. destruction it had suffered during the war.
  - D. rise of the U.S.A. and U.S.S.R. as superpowers.

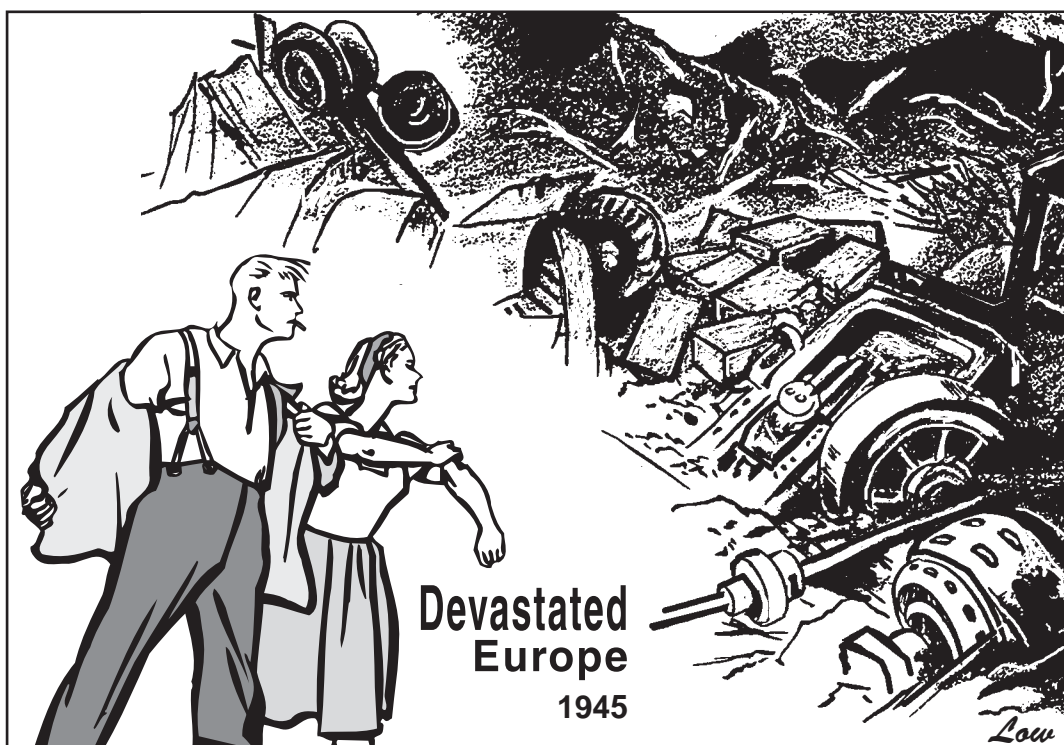
**Use the following quotation to answer question 30.**

In 1945, I ordered the A-bomb dropped on Japan at two places. We were at war. We were trying to end it in order to save the lives of our soldiers and sailors. In my opinion the A-Bomb had to be used to end the unnecessary slaughter on both sides.

Harry Truman, *Memoirs* (1955)

30. What is the **main** reason that an historian might question the reliability of this evidence?
- A. It contains historical errors.
  - B. Truman was no longer president in 1955.
  - C. It is a secondary source written years after the event.
  - D. Ten years after the event Truman was trying to justify his actions.

Use the following cartoon to answer question 31.



**AND NOW TO WORK**

31. Much of the work of rebuilding was made possible by the
- A. Comintern.
  - B. Marshall Plan.
  - C. United Nations.
  - D. Cash-and-Carry Bill.
- 
32. Which of the following is an example of a direct cause → effect relationship?
- A. Berlin Airlift → Berlin Blockade
  - B. Brezhnev Doctrine → Hungarian Uprising
  - C. Cuban Missile Crisis → Partial Test Ban Treaty
  - D. Soviet Invasion of Afghanistan → SALT II Agreement
33. What did divisions within the Indian independence movement lead to?
- A. the creation of a Sikh homeland in India
  - B. the political separation of Sikhs and Hindus
  - C. the establishment of Kashmir as an independent state
  - D. the creation of separate states for Hindus and Muslims



Use the following document to answer question 34.

Dear Mr. Chairman President,

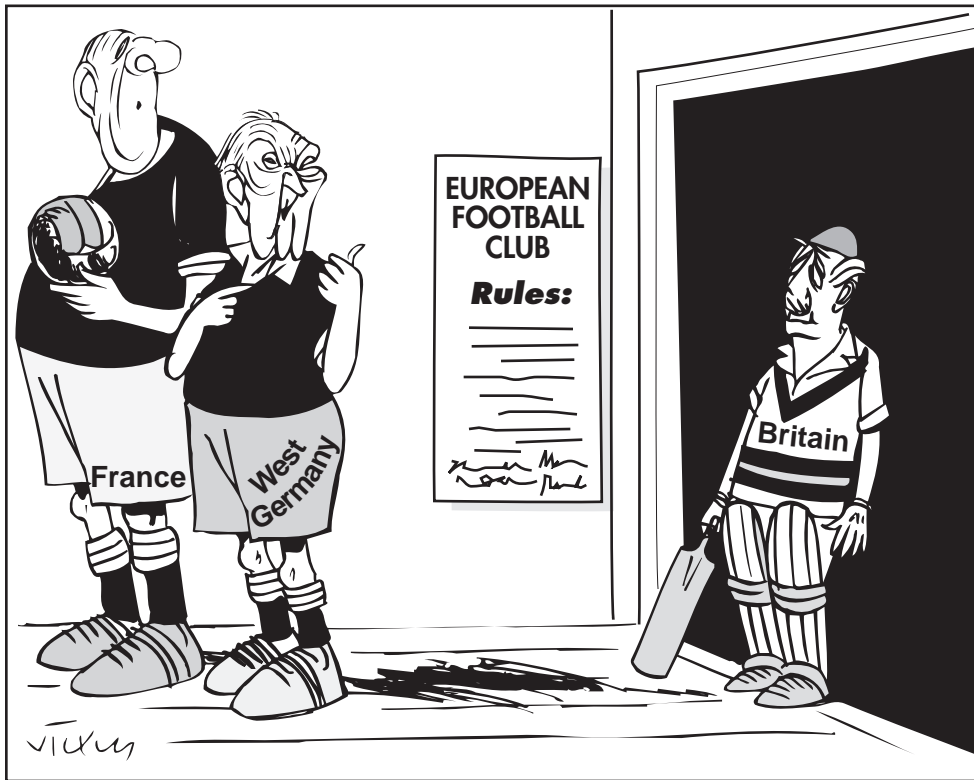
I know how much my husband cared about peace.... You and he were adversaries, but you were allied in a determination that the world should not be blown up. You respected each other and could deal with each other.

Sincerely,

Jacqueline Kennedy (1964)

34. To which of the following world leaders was Jacqueline Kennedy **most likely** addressing this letter?
- A. Brandt
  - B. Brezhnev
  - C. Khrushchev
  - D. Mao Zedong
- 
35. For what purpose was the North Atlantic Treaty Organization (NATO) established?
- A. to prevent the reunification of Germany
  - B. to protect Western Europe from a communist attack
  - C. to unite the western powers against the Warsaw Pact
  - D. to permit a U.S. military withdrawal from Western Europe
36. All of the following were characteristics of West Germany during the 1950s **except**
- A. membership in NATO.
  - B. a free-market economy.
  - C. stable democratic government.
  - D. the revival of the Communist party.

Use the following cartoon to answer question 37.



Vicky, *The Cartoon History of Britain* (1971)

He says he wants to join, but on his own terms...

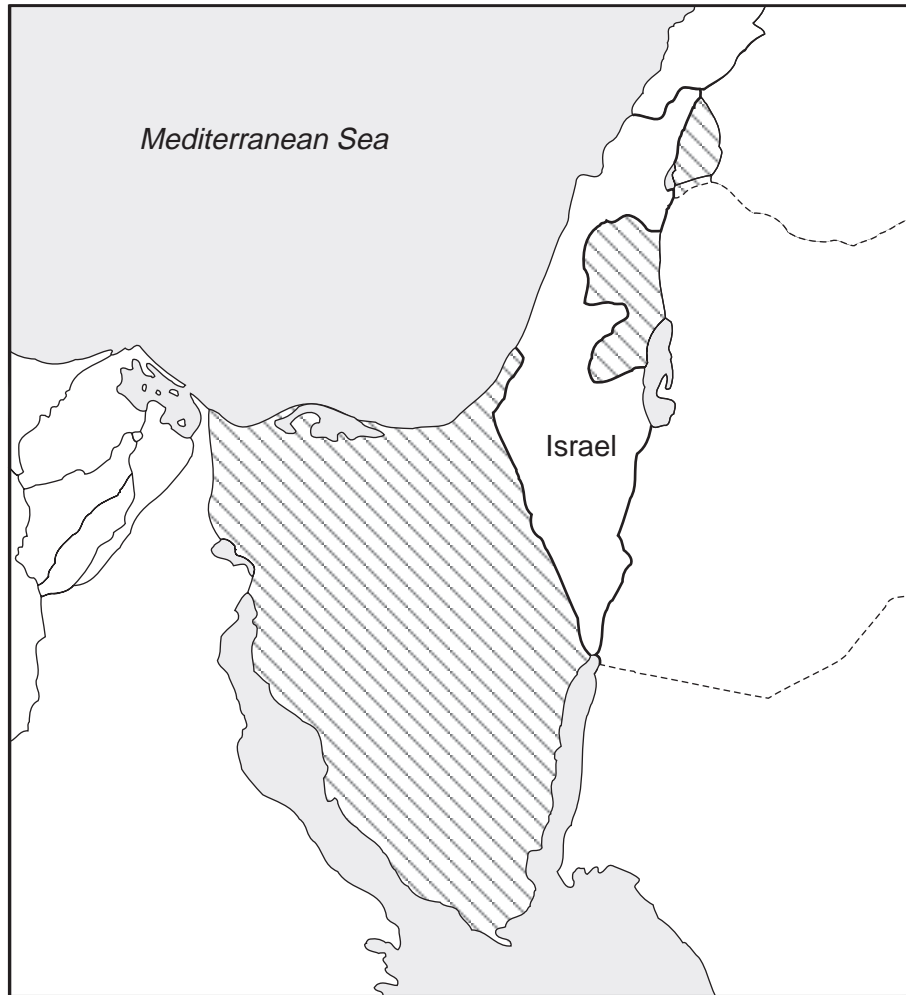
37. What organization is Britain trying to join?

- A. International Monetary Fund (IMF)
- B. European Economic Community (EEC)
- C. European Free Trade Association (EFTA)
- D. Organization for European Economic Cooperation (OEEC)

38. What Soviet policy did Khrushchev introduce to help ease tensions with the West?

- A. *ostpolitik*
- B. containment
- C. peaceful co-existence
- D. the Khrushchev Doctrine

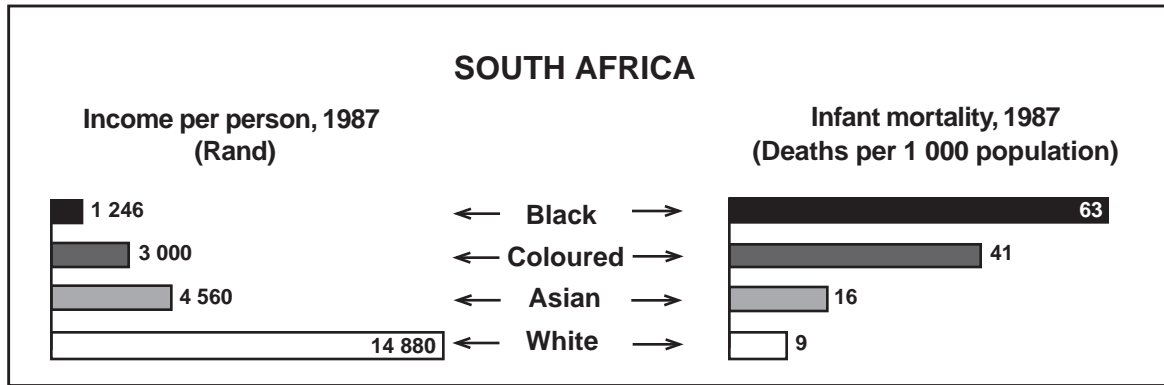
Use the following map to answer question 39.



39. In which war did Israel gain the striped areas marked on the map?

- A. the Gulf War
- B. the Six-Day War
- C. the Suez Canal War
- D. the Yom Kippur War

Use the following information to answer question 40.



40. Which of the following can be concluded from an examination of these two graphs?

- A. Apartheid was only applied to blacks.
- B. Blacks suffered the most under apartheid.
- C. More children were born to black parents than to non-blacks.
- D. Coloured and Asians were treated as equals by the white community.

41. Which of the following shows the political significance of the Tet Offensive?

- A. It demonstrated U.S. military superiority.
- B. It was the first military victory for the Vietcong.
- C. It caused an increase in anti-war protest in the U.S.A.
- D. It caused the Chinese to enter the war in support of North Vietnam.

42. Which of the following is inconsistent with the others?

- A. Détente
- B. SALT 1
- C. Brezhnev Doctrine
- D. Partial Test-Ban Treaty

Use the following cartoon to answer question 43.



So, I'm an odd-looking Arab am I?  
Well, I must say, you certainly don't look Jewish.

43. This cartoon suggests that superpower involvement in the Middle East
- A. was justified.
  - B. brought peace.
  - C. intensified conflict.
  - D. encouraged détente.

**THIS PAGE INTENTIONALLY BLANK**

**Use the following quotation to answer question 44.**

I planned sabotage as a result of many years of tyranny. Fifty years of non-violence had brought the African people even fewer rights.

Nelson Mandela

44. Who would be **least** likely to agree with Mandela's views?
- A. Malcolm X
  - B. Ho Chi Minh
  - C. Yasser Arafat
  - D. Mohandas Gandhi
- 
45. Both the U.S.S.R. in Afghanistan and the U.S.A. in South Vietnam
- A. enjoyed broad public support at home.
  - B. faced enemies who used guerrilla warfare tactics.
  - C. were able to take effective control of the countryside.
  - D. were supported by the United Nations' Security Council.

Use the following documents to answer questions 46, 47 and 48.

**DOCUMENT 1**

- a) Official trade unions should be disbanded in favour of freely elected, independent unions.
- b) The “commercial shops” should be closed and meat prices be restored to their former subsidized levels.
- c) A wage rise of 2 000 zlotys (about \$60.00) per month should be paid in Gdansk.
- d) Pensions and family allowances should be increased.
- e) Three fired shipyard workers should be reinstated.
- f) A monument should be set up to remember workers killed in the 1970 riots.
- g) These demands should be published by the mass media.

Demands of striking shipyard workers, Gdansk, Poland (August 14, 1980)

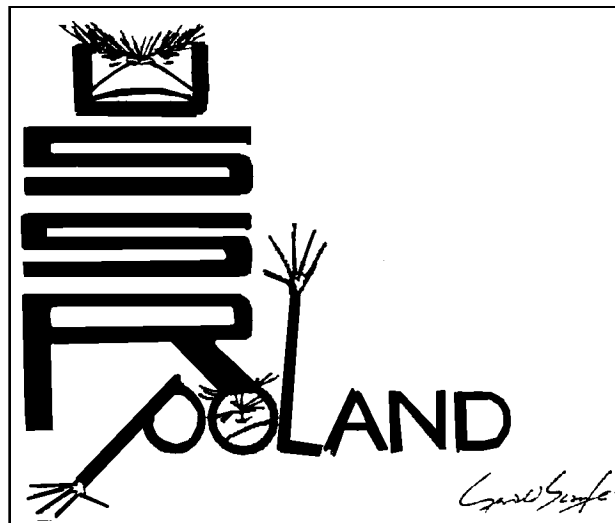
**DOCUMENT 2**

The activities of the trade unions in Poland have not fulfilled the hopes and expectations of the workers. It has been found necessary to call up new, self-governing trade unions which will become authentic representatives of the working class.

The government undertakes to revise the censorship laws, free public access to certain documents... to permit the broadcasting of Catholic church services on Sundays... to submit for reconsideration by the Ministry of Justice the cases of named persons convicted in connection with human rights activities... wage increases for lower paid workers, increased provision of housing and pension facilities... The question of meat sales from commercial shops is to be examined.

Part of an agreement between Polish government  
and Gdansk Workers Committee (August 31, 1980)

**DOCUMENT 3**



Gerald Scarfe, *The Sunday Times* (August 24, 1980)



46. Which of the following **best** describes Document 1?
- A. a secondary source in support of Polish workers
  - B. a primary source critical of the Polish government
  - C. a primary source against the need for workers' unions in Poland
  - D. a secondary source in favour of the demands of shipyard workers in Poland
47. In what way are Documents 1 and 2 related?
- A. Document 1 is a cause and Document 2 is its effect.
  - B. Both Documents are from reliable official government sources.
  - C. Document 1 shows the result of changes described in Document 2.
  - D. Both Documents reveal freedom of religion, of the press, and of association in Poland.
48. In Document 3 whose face is represented inside the letter "O" of Poland?
- A. Kohl
  - B. Walesa
  - C. Brezhnev
  - D. Khrushchev
- 
49. Which of the following **best** describes Poland in 1980?
- A. a communist dictatorship in the Warsaw Pact
  - B. an independent nation ruled by the Solidarity Party
  - C. a non-aligned country with a communist government
  - D. a democratic state in the North Atlantic Treaty Organization

50. Which of the following was an outcome of Gorbachev's policy of glasnost?
- A. stabilization of the Russian economy
  - B. ethnic unrest in the non-Russian republics of the U.S.S.R.
  - C. increased economic control by the State Planning Agency
  - D. Communist Party control over political affairs of minority groups
51. Which of the following intensified the instability in the Middle East in the 1980s?
- A. the rise of Islamic fundamentalism
  - B. the continuing conflict between Israel and Egypt
  - C. the withdrawal of UN peacekeepers from Afghanistan
  - D. the refusal of the U.S. to maintain its support for Israel

**This is the end of the multiple-choice section.**  
**Answer the remaining questions directly in this examination booklet.**

## **PART B: WRITTEN RESPONSE**

**Value: 16 marks**

**Suggested Time: 30 minutes**

### **INSTRUCTIONS:**

- Read the written-response questions on pages 23 to 25.
- Select **one** question from SECTION 1 and respond to **all parts** of that question on the appropriate page.

AND

- Select **one** question from SECTION 2 and respond to **all parts** of that question on the appropriate page.

**Note: Only the two written responses satisfying the selection criteria above will be marked.**

## **Organization and Planning**



**SECTION 2:**

**I have selected question number \_\_\_\_\_.**

**Question 3: Use the following statement to answer question 3.**

The Civil Rights Act of 1964 was a triumph in the struggle for integration in the U.S.A.

- a) Identify those opposed to integration and describe the reasons for their opposition. **(3 marks)**
- b) Explain the steps taken by the Civil Rights Movement which led to the Civil Rights Act of 1964. **(5 marks)**

..... **OR** .....

**Question 4: Use the following statement to answer question 4.**

The Cuban Missile Crisis was the high point of the Cold War.

- a) Describe the developments which led to the Cuban Missile Crisis and the U.S. actions during the crisis. **(4 marks)**
- b) Explain how the crisis was resolved and what measures were taken to preserve world peace. **(4 marks)**

a) \_\_\_\_\_  
\_\_\_\_\_  
\_\_\_\_\_  
\_\_\_\_\_  
\_\_\_\_\_  
\_\_\_\_\_  
\_\_\_\_\_  
\_\_\_\_\_  
\_\_\_\_\_  
\_\_\_\_\_  
\_\_\_\_\_



**THIS PAGE INTENTIONALLY BLANK**



**PART C: ESSAY**

**Value: 25 marks**

**Suggested Time: 45 minutes**

**INSTRUCTIONS:** Choose **Topic 1** or **Topic 2**. Write a well-constructed essay in **ink** in the space provided.

A **good** answer **must**

- develop a thesis, and
- use examples from throughout the history of the period 1917 to 1991.

**Question 5:**

**TOPIC 1**

In the twentieth century, the U.S.A. went to war to resist aggression.

To what extent is this an accurate statement regarding the period 1917 to 1991?

**OR**

**TOPIC 2**

In the twentieth century, the ability of authoritarian governments to gain and maintain power was reduced by technological progress.

To what extent is this an accurate statement regarding the period 1917 to 1991?

## **Organization and Planning**







